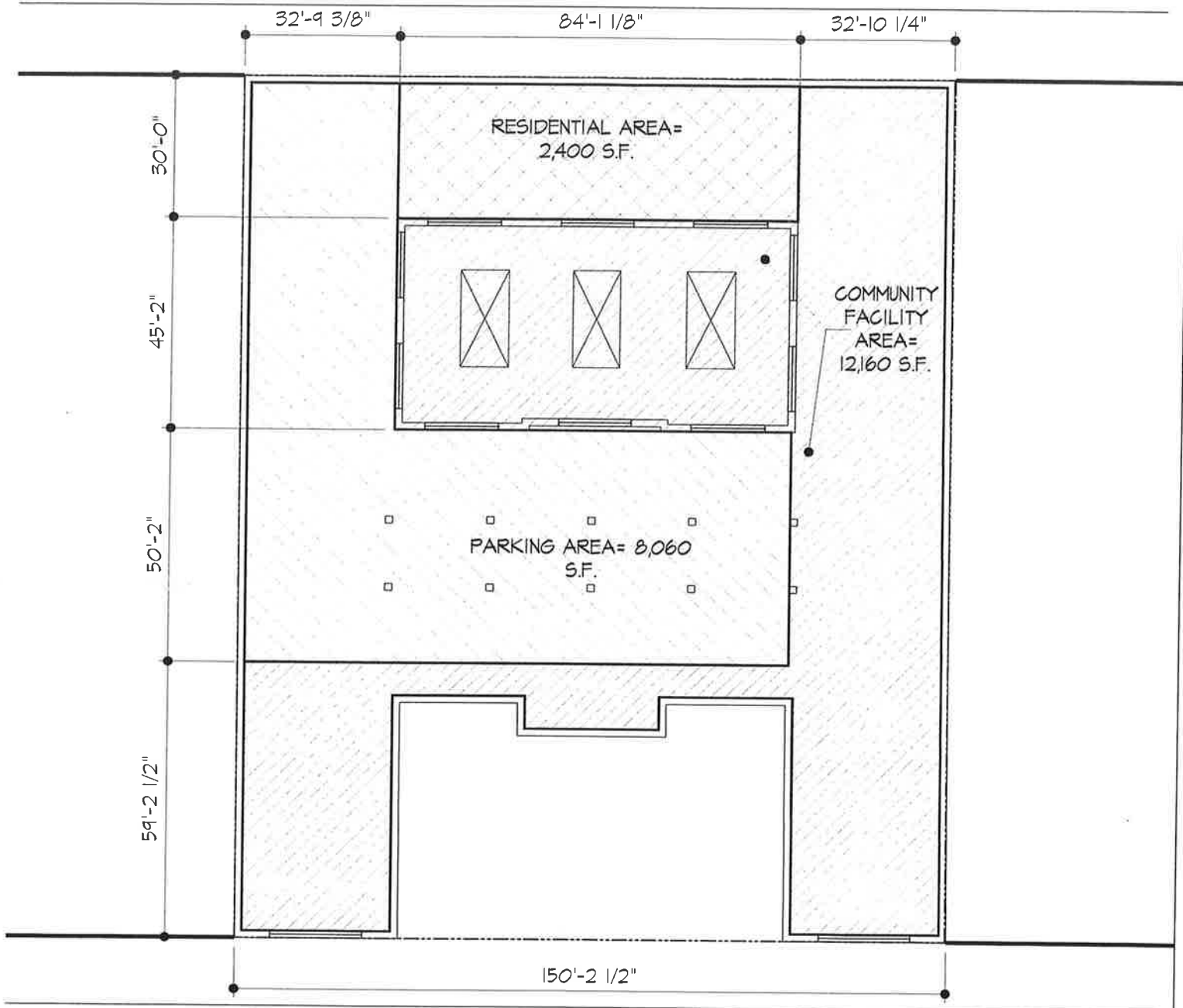


EAST 10TH STREET



EAST 9TH STREET

Meltzer/Mandl Architects, P.C.

215 Park Avenue South, New York, NY 10003

Phone: (646) 654-2800 Fax: (646) 654-2801

CELLAR PLAN A
605 E. 9TH STREET

9TH & 10TH STREET LLC

06-29-06

EAST 10TH STREET

32'-9 3/8"

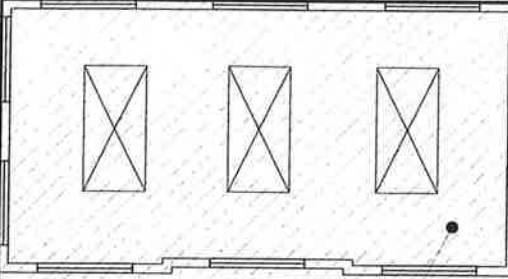
84'-1 1/8"

32'-10 1/4"

30'-0"

RESIDENTIAL AREA =
2,400 S.F.

45'-2"



28'-7 1/16"

COMMUNITY FACILITY
AREA = 11,920 S.F.

80'-9 7/16"

PARKING AREA = 8,300
S.F.

150'-2 1/2"

EAST 9TH STREET

Meltzer/Mandl Architects, P.C.

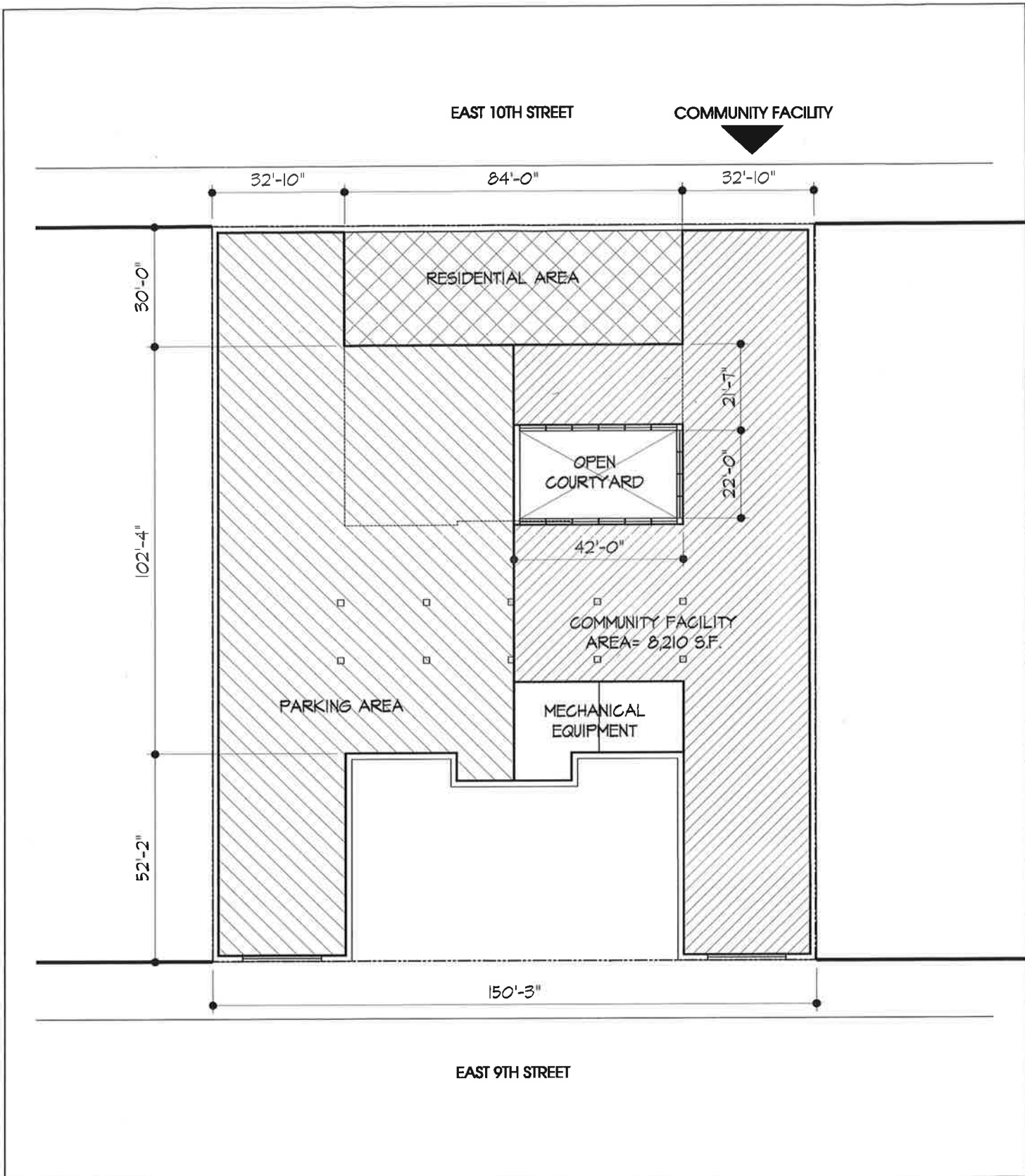
215 Park Avenue South, New York, NY 10003

Phone: (646) 654-2800 Fax: (646) 654-2801

CELLAR PLAN B
605 E. 9TH STREET

9TH & 10TH STREET LLC

06-29-06



Meltzer/Mandl Architects, P.C.

215 Park Avenue South, New York, NY 10003

Phone: (646) 654-2800 Fax: (646) 654-2801

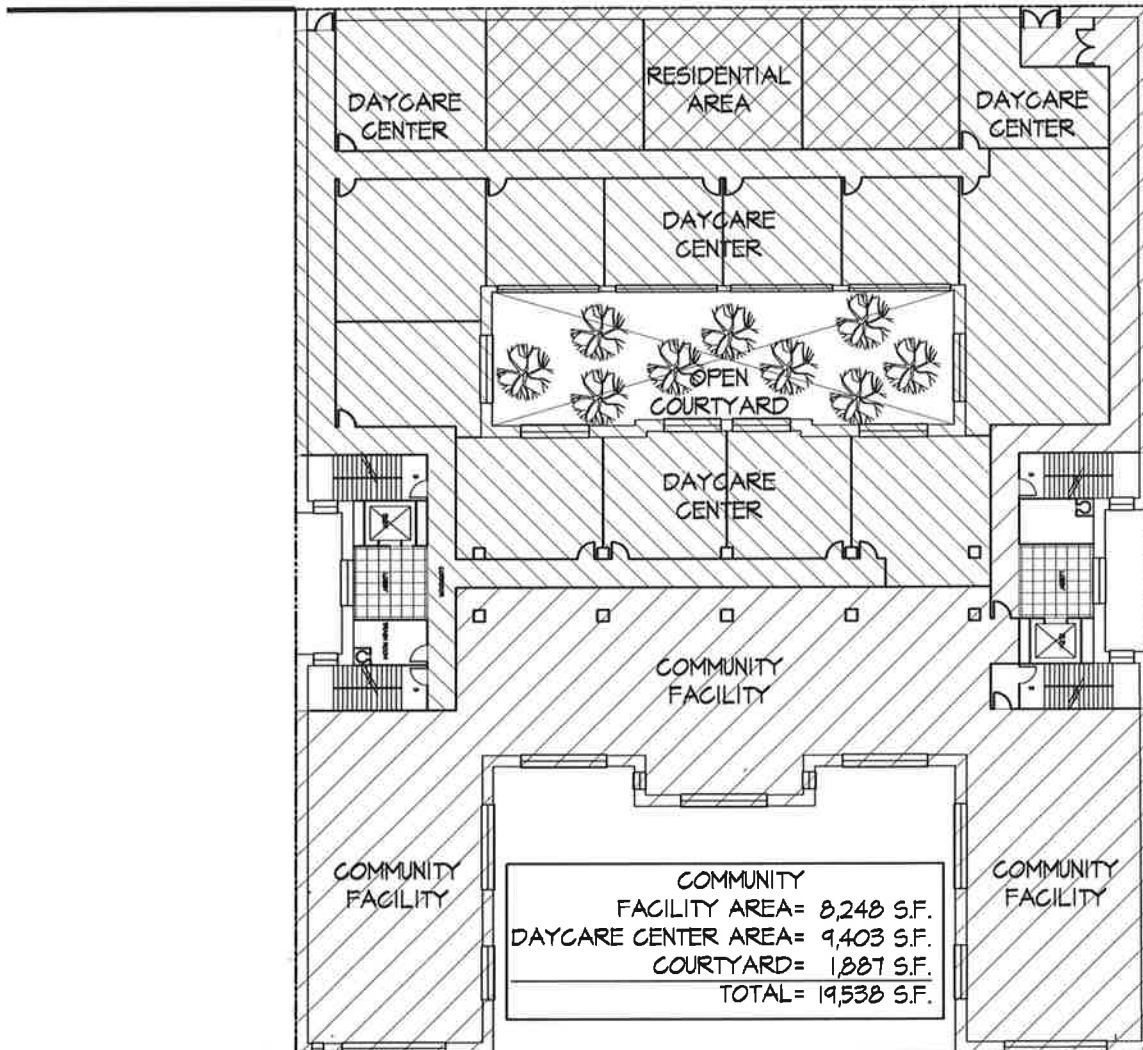
LOWER LEVEL
605 E. 9TH STREET

9TH & 10TH STREET LLC
07-05-06

DAYCARE CENTER
ENTRANCE

COMMUNITY FACILITY
ENTRANCE

EAST 10TH STREET



EAST 9TH STREET

Meltzer/Mandl Architects, P.C.

215 Park Avenue South, New York, NY 10003

Phone: (646) 654-2800 Fax: (646) 654-2801

LOWER LEVEL
605 E. 9TH STREET

9TH & 10TH STREET LLC
08-08-06